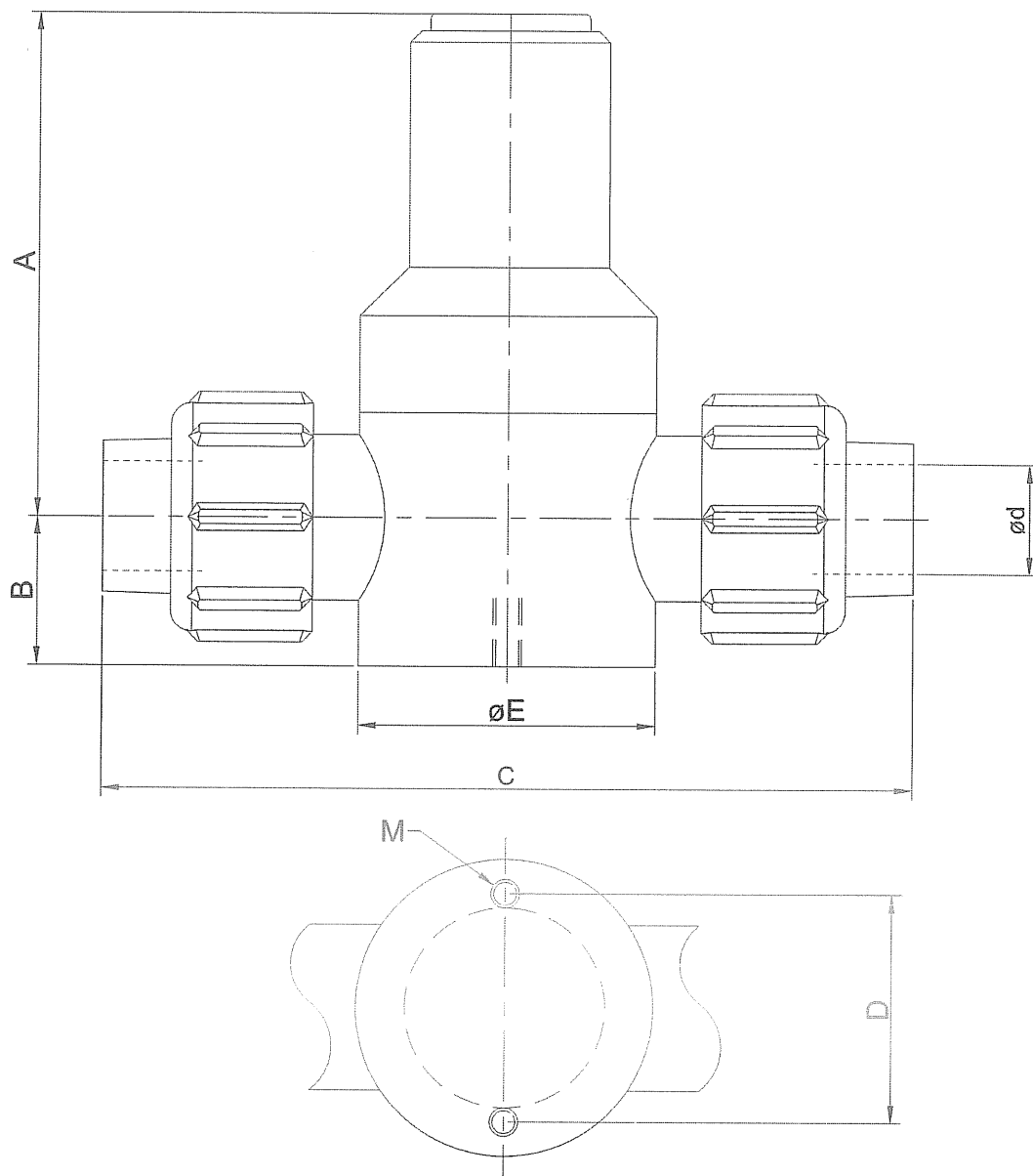


© THIS DRAWING IS THE PROPERTY OF PROCHEM SERVICES AND CANNOT BE REPRODUCED OR USED WITHOUT THE COMPANIES EXPRESS PERMISSION.



$\phi d$			A	B	C	D	E	F	M
O.D	DN	NB							
16	10	$\frac{3}{8}$ "	88	26	126	40	52		M5
20	15	$\frac{1}{2}$ "	88	26	134	40	52		M5
25	20	$\frac{3}{4}$ "	105	33	154	50	64		M5
32	25	1"	108	35	176	60	79		M6
40	32	$1\frac{1}{4}$ "	116	42	210	70	89		M6
50	40	$1\frac{1}{2}$ "	140	46	232	80	109		M6
63	50	2"	156	57	290	100	126		M6

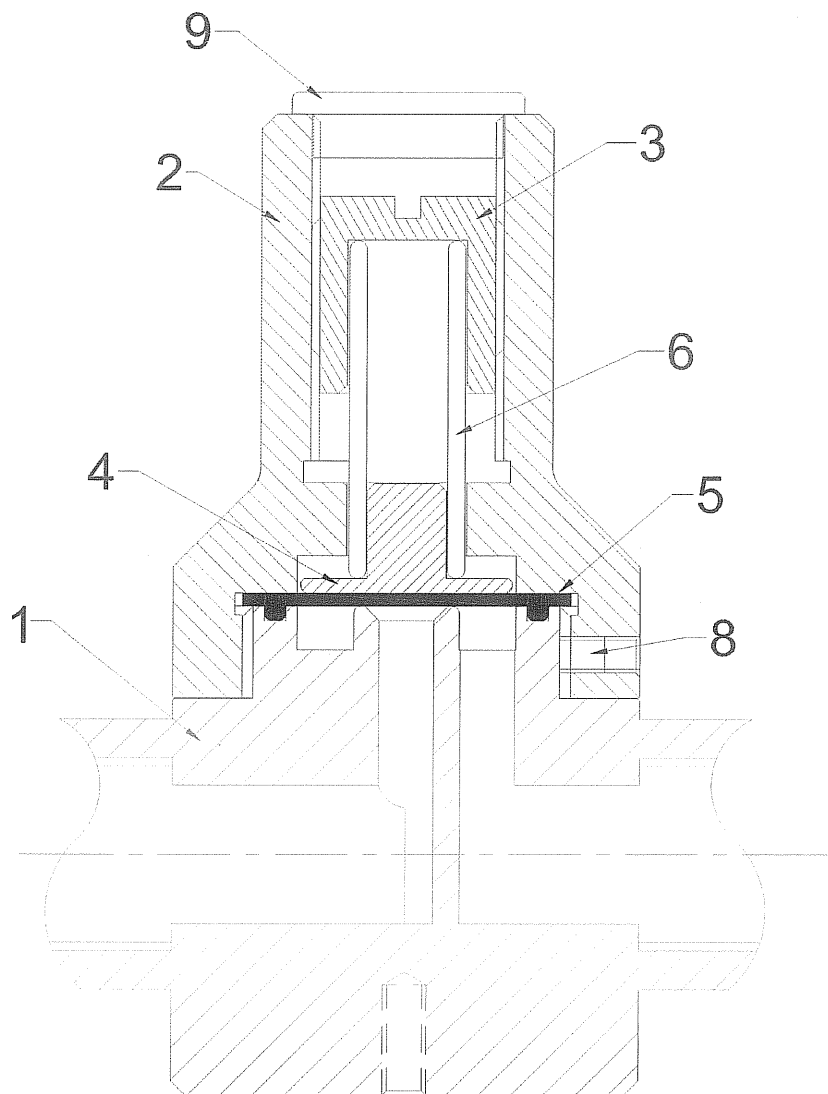
TOLERANCES: +/- 0.5 MM UNLESS STATED  
DIMENSION 'C' +/- 1.00 MM

ALL DIMENSIONS IN MM UNLESS OTHERWISE STATED

<b>PROCHEM SERVICES LTD</b> CONGLETON, CHESHIRE, CW12 2AD, ENGLAND	
<b>DRAWING No. PS/12/961</b>	<b>REV 0</b>
<b>SUBJECT</b> 1100 SERIES OUTLINE UNION CONNECTIONS PP/ PVDF	

DRAWN	RB	DATE	24.09.12
REV		REV	
REV		REV	

© THIS DRAWING IS THE PROPERTY OF PROCHEM SERVICES AND CANNOT BE REPRODUCED OR USED WITHOUT THE COMPANIES EXPRESS PERMISSION.



ACTUAL PIPELINE CONNECTIONS  
OMITTED FOR CLARITY

ITEM	DESCRIPTION	MATERIAL	
1	BODY ASSEMBLY	AS ORDERED	
2	BONNET	PVC	
3	ADJUSTER SCREW	PVC	*
4	PRESSURE PAD	STEEL	*
5	DIAPHRAGM	AS ORDERED	*
6	LOADING SPRING	STEEL	*
7			
8	BONNET LOCK SCREW	316 ST/STEEL	
9	CAP	POLYPROPYLENE	

\* RECOMMENDED SPARES

<b>PROCHEM SERVICES LTD</b>	
CONGLETON, CHESHIRE, CW12 2AD, ENGLAND	
DRAWING No. <b>PS/92/243</b>	REV 2
SUBJECT	
1100 SECTION & PARTS LIST	

REV		REV	
REV		REV	